

# **SINDH EDUCATION FOUNDATION, GOVERNMENT OF SINDH**

## **“Promoting Private Schooling in Rural Sindh (PPRS)”**

### **Terms of Reference for E-Marking of Student Assessments**

---

#### **PROJECT BRIEF:**

Sindh Education Foundation has been running a program named “Promoting Private Schooling in Rural Sindh” PPRS a public-private partnership project based on per child subsidy model, free quality education for all in 10 Districts of Sindh. The goal of the program is to establish public private partnership for increasing access to and improving the quality of educational services provided to the children in marginalized area of Sindh province with support of private sector.

The program objectives are:

- Establish long-term public-private partnership by supporting private schools in order to increase access to education in marginalized areas of Sindh.
- Enhance the quality of education and educational practices within classroom thereby improving student learning outcomes.
- Reduce gender disparity in education.

**PROJECT OUTREACH:** 1000 Schools, based at 10 districts of Sindh.

**PROJECT TIMELINE:** The project was initiated in 2009 and will be completed in June 2017.

#### **RATIONAL FOR THE CONSULTANCY:**

To E-mark/assess the papers by an autonomous body in order to have transparency of the whole assessment framework with the help of latest marking software's and to conduct analysis using Item Response Theory (IRT) mechanism.

## OBJECTIVES FOR THE CONSULTANCY:

- To assess the teaching and learning in schools in particular to early childhood education till primary level.
- To limit personal biasness of SEF towards the program.
- To ensure international level independent checking by a reputable assessment agency.
- To implement internationally set norms of assessment.

## ASSESSMENT SPECIFICATION:

### Type of Papers

- The assessment is planned to be conducted in Grades Katchi, to V (Primary).
- The assessment papers will include Multiple Choice Questions (MCQs) and Short Responses.
- MCQs in the papers would consist of (3-4) options along with a variety of short questions in which students will be expected to write answers briefly and to the point.

### Timings

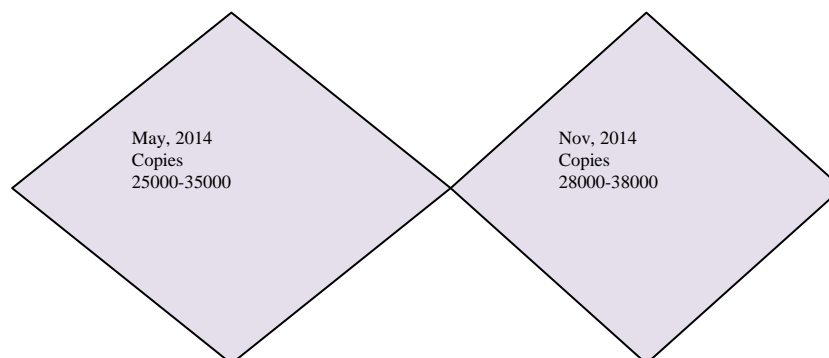
- The time duration of papers would vary according to the Grades and Subjects, the range of which would be from 45 minutes minimum to 90 minutes maximum.
- Each booklet would approximately contain between 16-28 pages on average.

### Scope

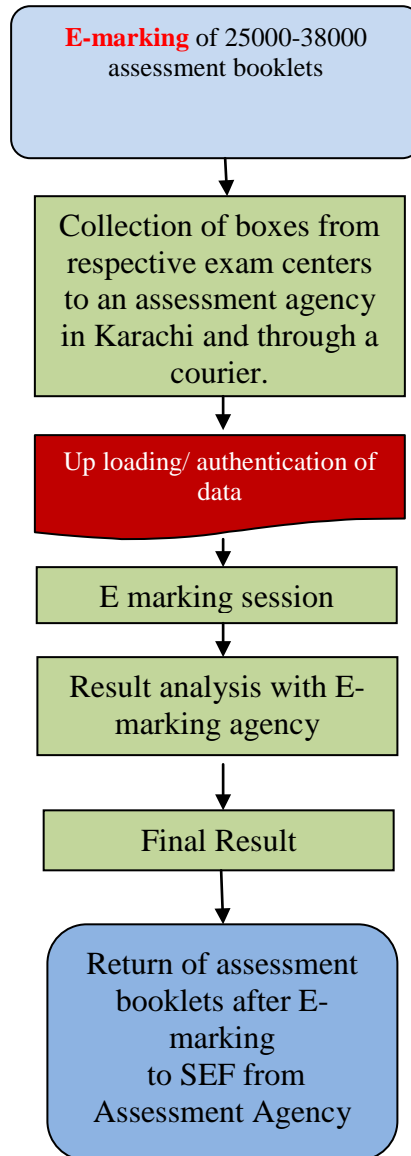
- The papers will be developed keeping in view the National Curriculum and its competencies, indicative of the learning abilities of the students according to their age and class room practices. The content included in the paper would be aligned with the recommended text books.

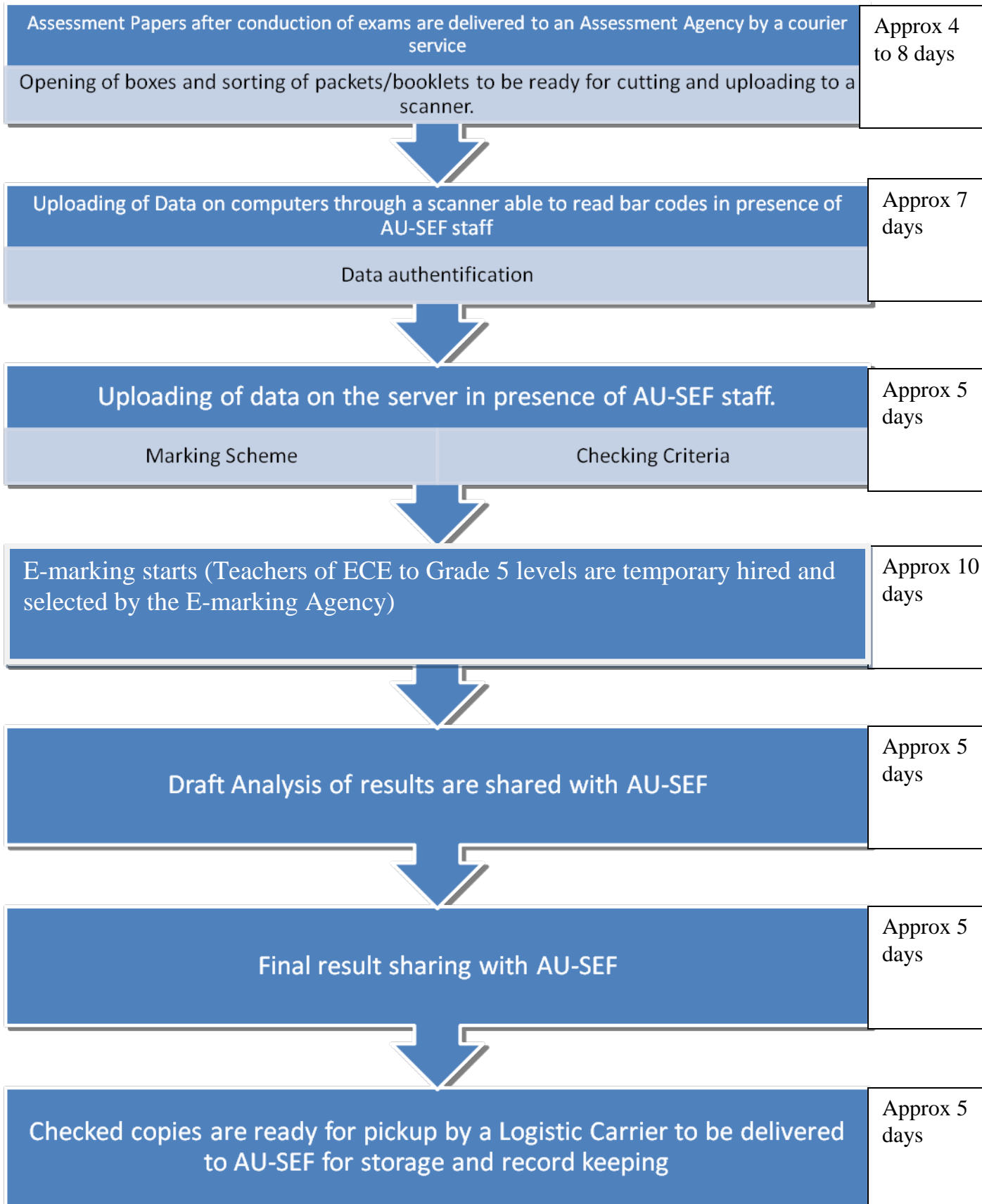
### Assessment Cycle and Process

- There would be (2) assessment



## Process of E-marking





**REQUIREMENTS FROM CONSULTANT:**

The consultant will take over all responsibility for the E-marking, including:

Sorting of packets  
Cutting of answer scripts  
Scanning of assessment booklets  
Uploading of marks scheme  
Conduction of marking sessions  
Result compilation  
Result analysis  
and a detailed analytical report of the assessment.

**DELIVERABLES:**

- Provide complete analysis of assessment papers based on competency achievements.
- Soft data of all the uploaded material.
- Results in digital format, as well as 5 sets of hard copies.
- 2 sets of individual school report cards signed and sealed by the e-marking agency.
- The record of the results needs to be stored for 3 years as per government rules both in soft and hard version.

**Profiles Shortlisting Criteria:**

1. Bio Data of key personal with designation, education, experience.
2. Registered name, address, telephone, fax No, email address of the company & tax paying certification.
3. Working experience in same discipline (More than 7 years)
4. List of projects with cost completed by the firm during the last 5 years in the same discipline (evidence required).
5. Ability to assess more than 300,000 copies in one go.
6. Ability to analyze the papers using IRT (item response theory) software.
7. Bar-code readable machine/ software.
8. OMR readable machine/ software.
9. Exam paper scanning machine.
10. Secure transportation system of pickup and delivery.
11. List of litigations with the clients if any and nature of litigations and Affidavit that the firm has never been blacklisted.
12. Name of the bank with at least 3 years financial statement worth more than Rs. 30 million.

**TIME SCHEDULE:**

The E-marking is to be undertaken within 45-50 days .i.e. one and half months after awarding the complete consignment of answer scripts.

---

**For further details please contact:**

**Mr. Mehboob Ali Meghani**

Sr. Officer Exams & Administration

Cell: 0345-8268249

Email: [assessment@sef.org.pk](mailto:assessment@sef.org.pk)

**Ms. Huma Jabeen**

Sr. Officer Academics

Cell: 0345-8220391

Email: [huma@sef.org.pk](mailto:huma@sef.org.pk)